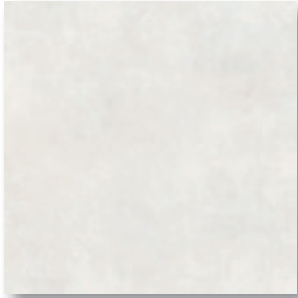


## FIELD TILE



Beige



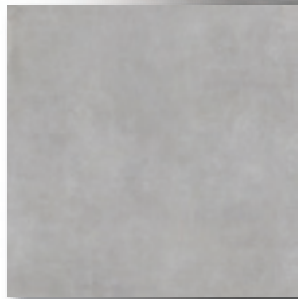
Blanco



Negro



Grafito



Gris



Shown: Grafito 32x32

### SPECIFICATIONS

Application	Floor
Visual	Contemporary
Type	H.D.I.T. Rectified Porcelain
Slip Resistant	No
PEI Rating	4
Frost Resistant	Yes
Shade Variation	Moderate/High
Screens/Faces	7

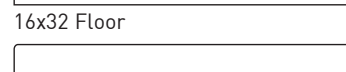


V3



Made in Spain

### SIZES



Note: Manufacturer does not recommend installing large format rectangular tile using a 50% staggered brick/running bond grout joint pattern. Joint locations can be random and should be positioned to be no less than 30% the length of the adjacent tile. Alternating joints so they are <30%, a straight-lay or herring bone patterns are acceptable and with grout joint sizes of 1/4" to 3/16" but no less than 1/8".